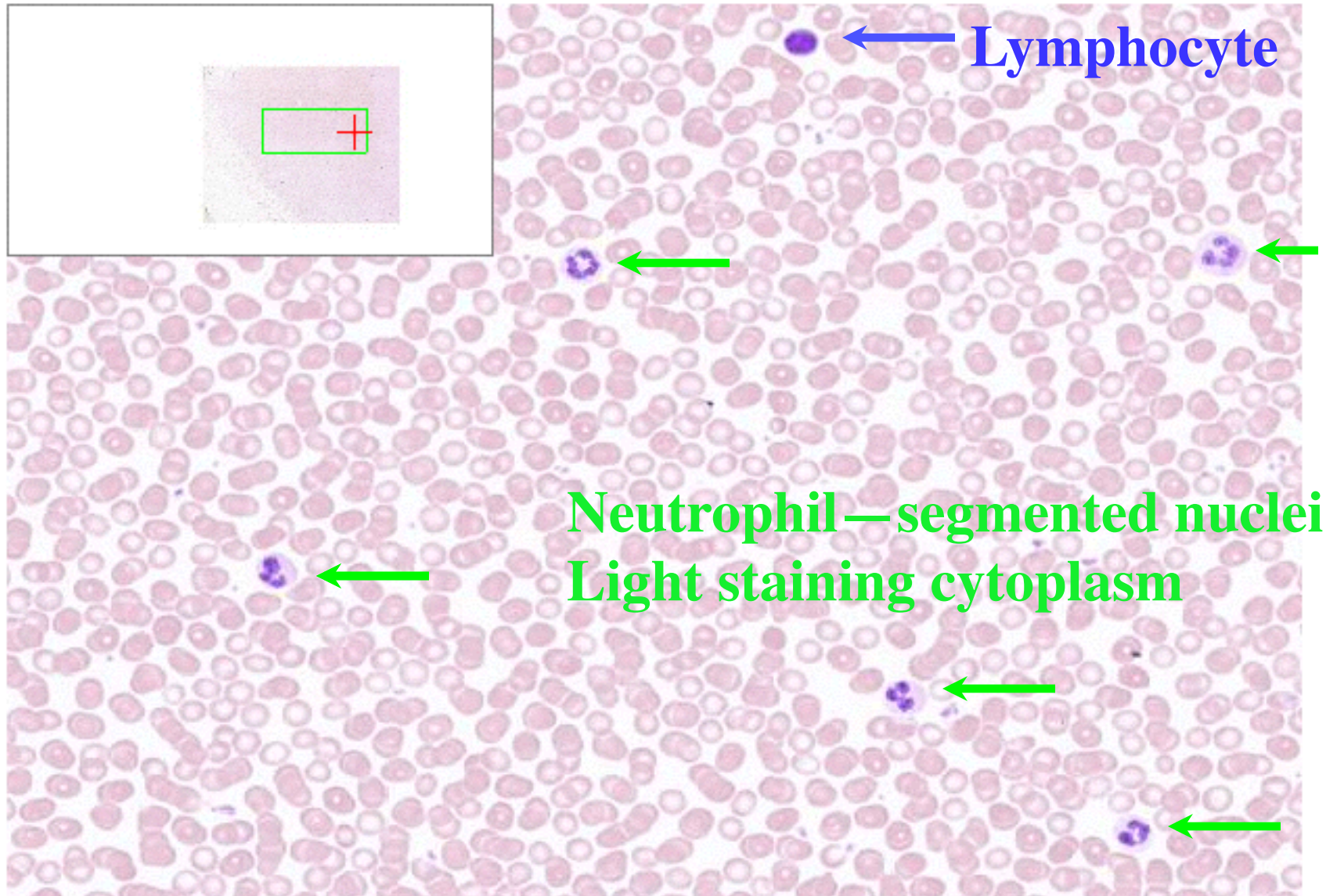
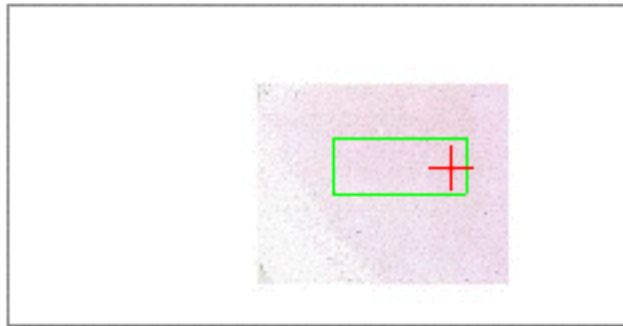


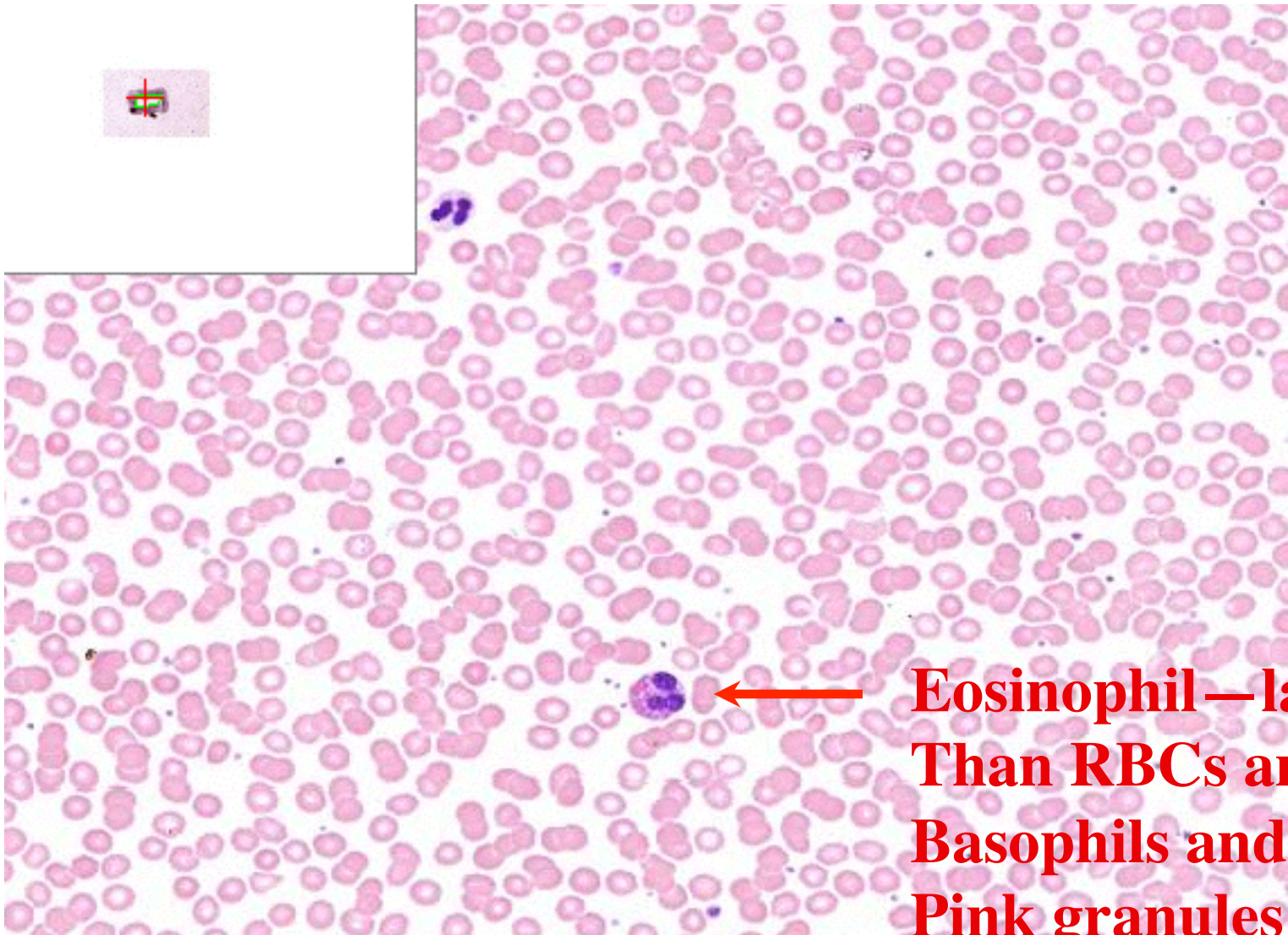
UW 007



Lymphocyte

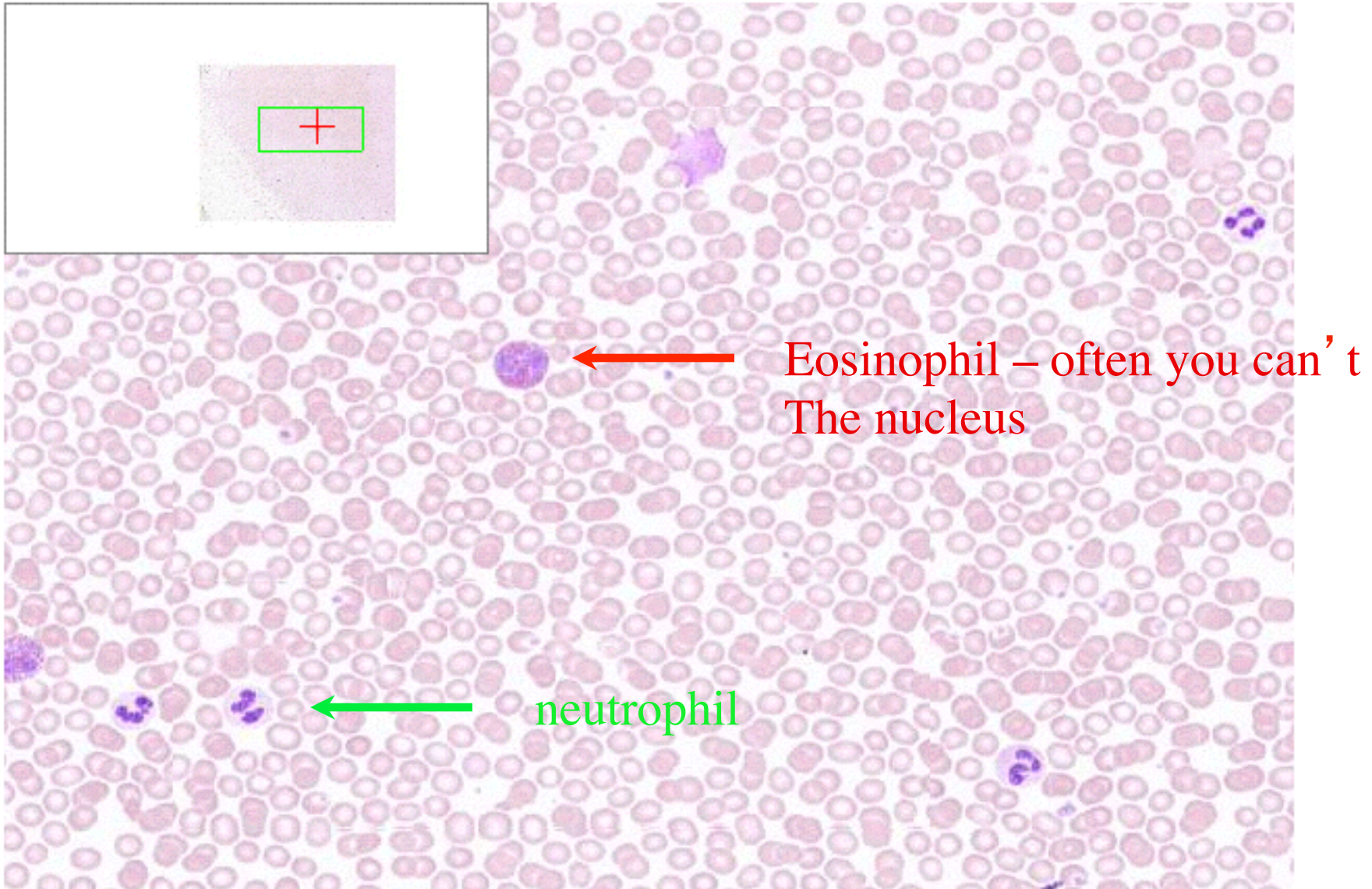
Neutrophil—segmented nuclei  
Light staining cytoplasm

MCW 005



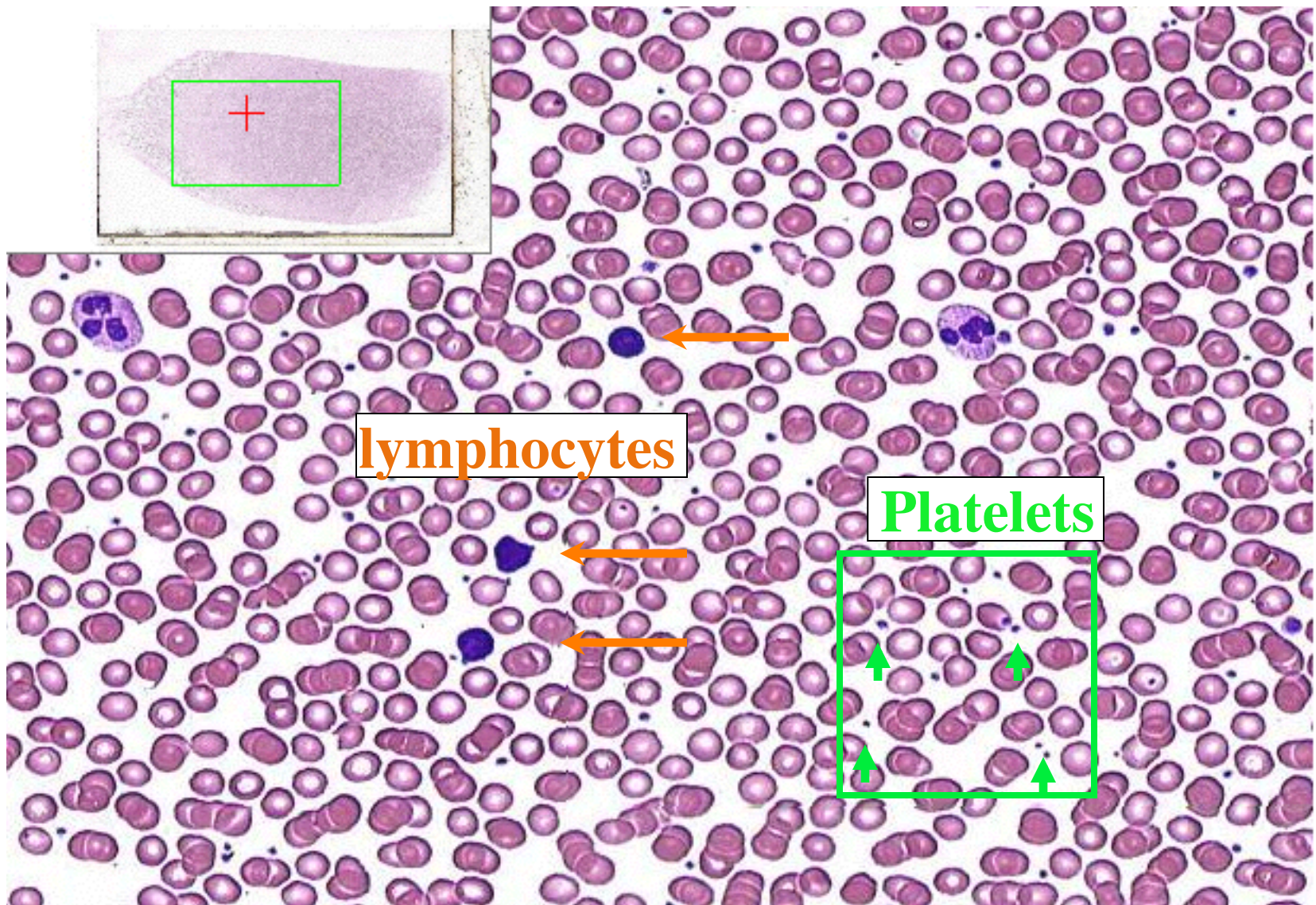
**Eosinophil—larger  
Than RBCs and  
Basophils and? has  
Pink granules**





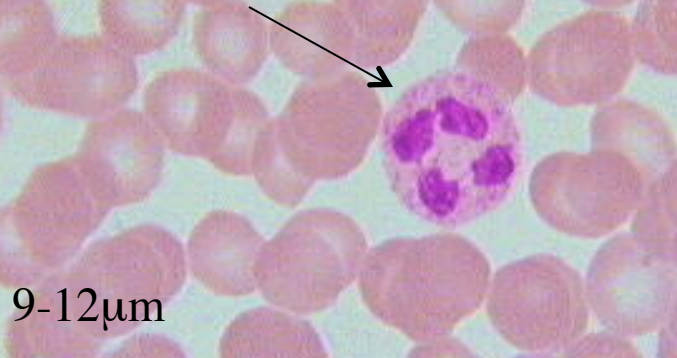


LH 0029



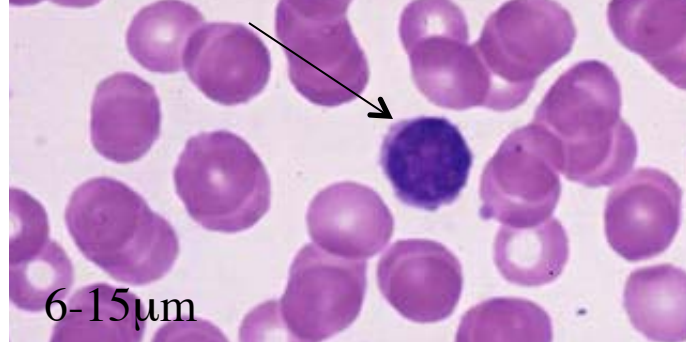


Neutrophil



9-12 $\mu$ m

Lymphocyte



6-15 $\mu$ m

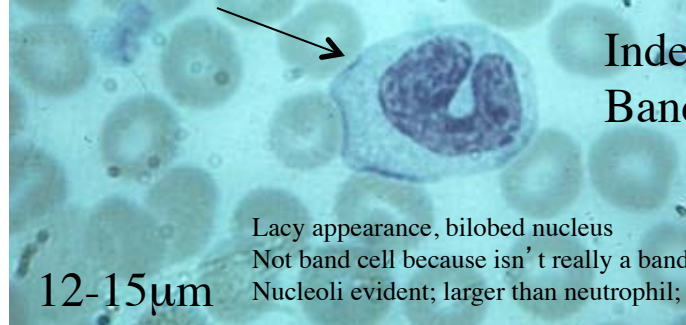
Eosinophil



Granules uniform and smooth,  
easily see nucleus  
Sometimes bright red granules

12-17 $\mu$ m

Monocyte

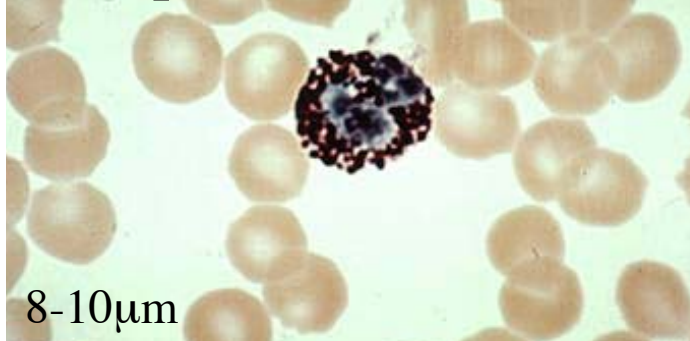


Indented v.  
Band cell horseshoe shape

Lacy appearance, bilobed nucleus  
Not band cell because isn't really a band and not around edge  
Nucleoli evident; larger than neutrophil; neutrophil more eosinophilic

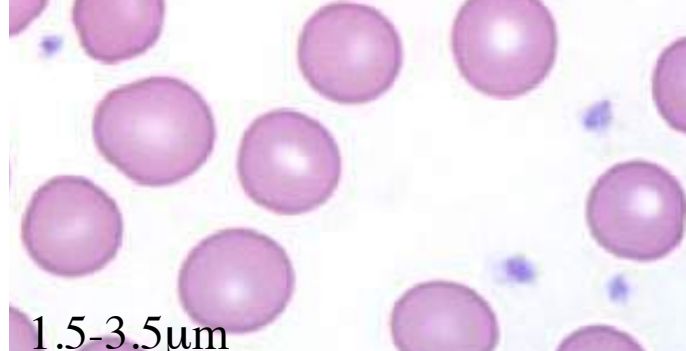
12-15 $\mu$ m

Basophil



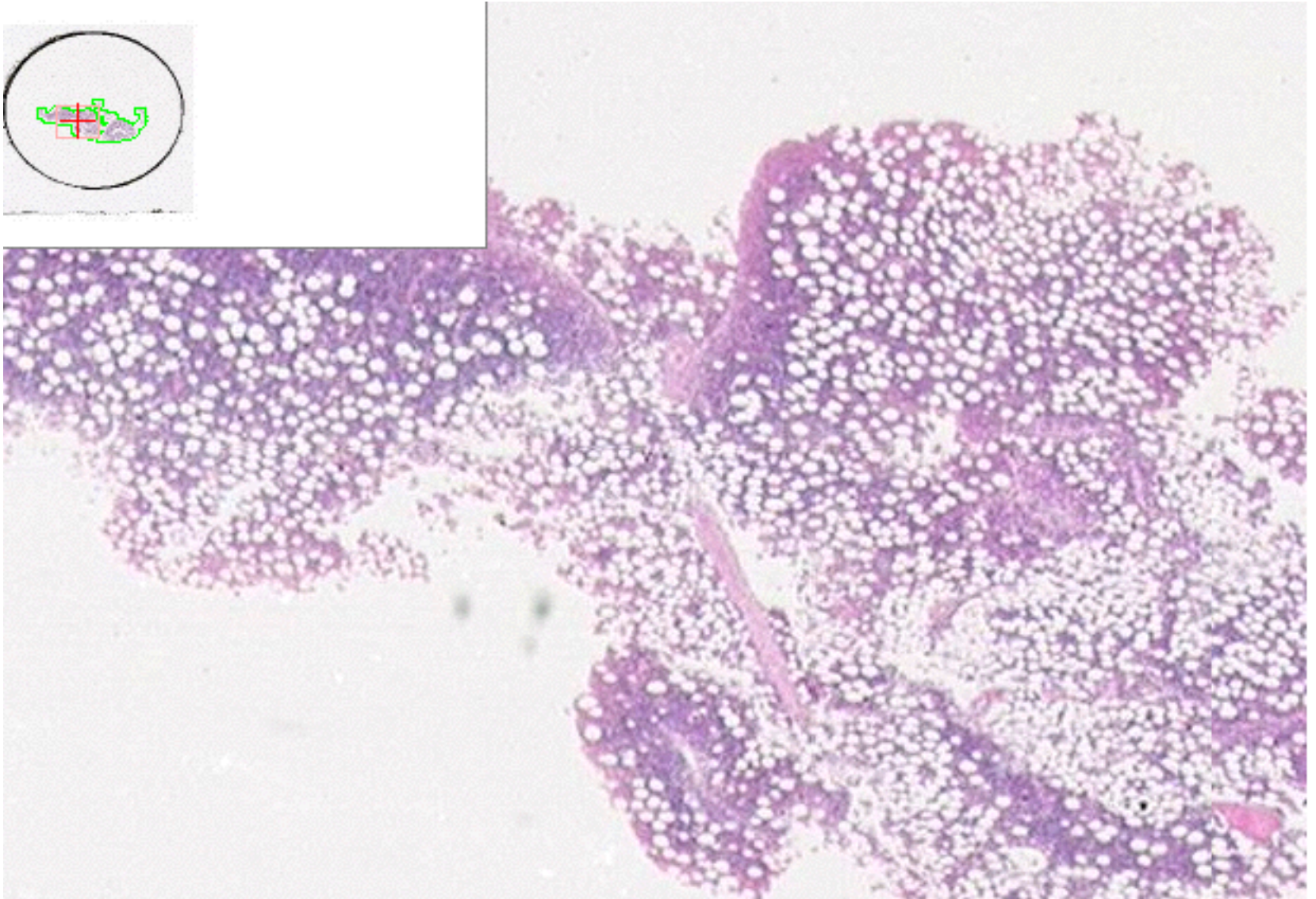
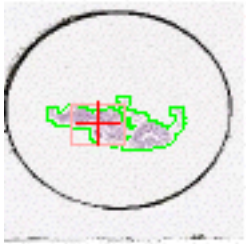
8-10 $\mu$ m

Platelets

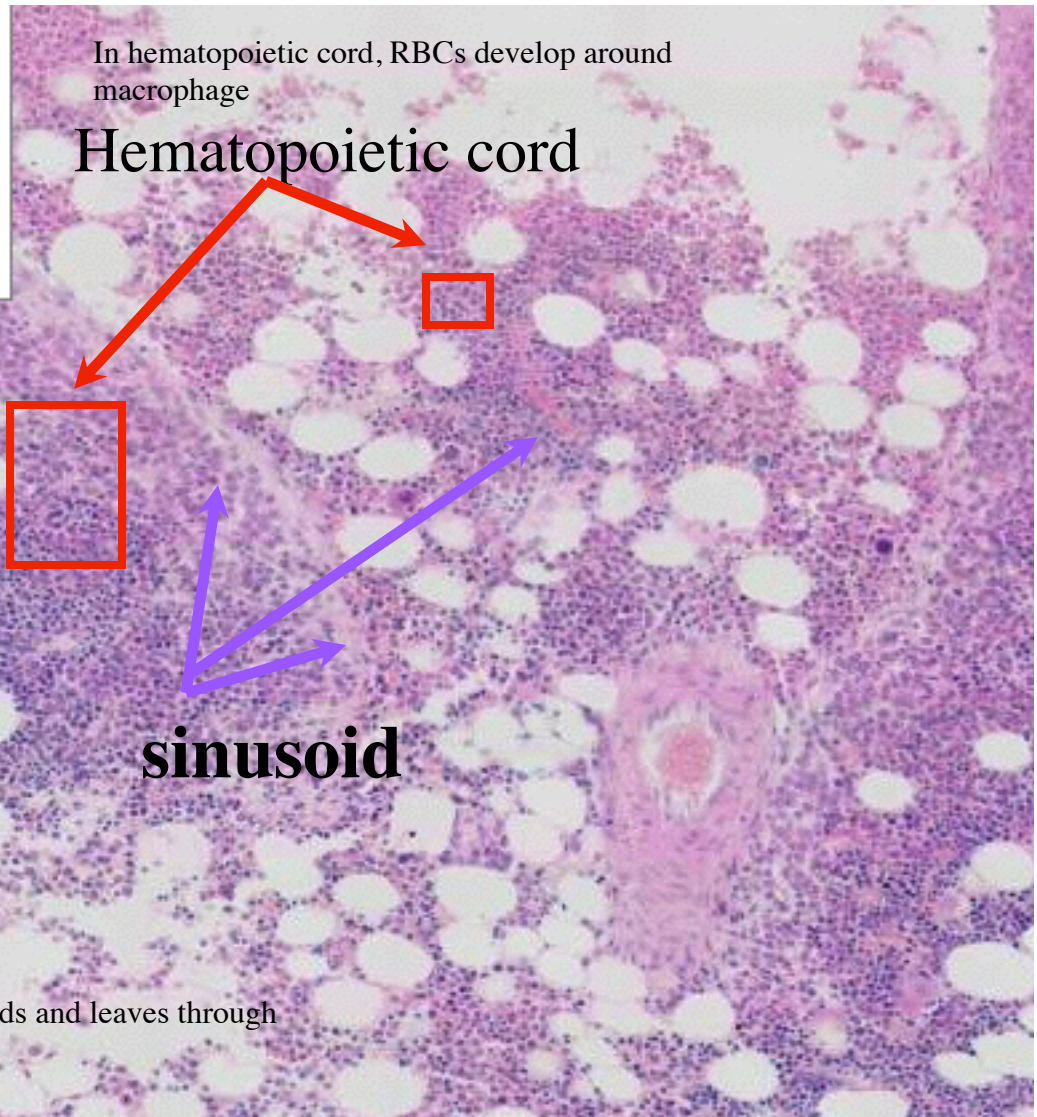
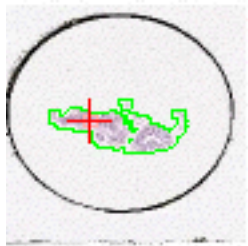


1.5-3.5 $\mu$ m

MCO 0020

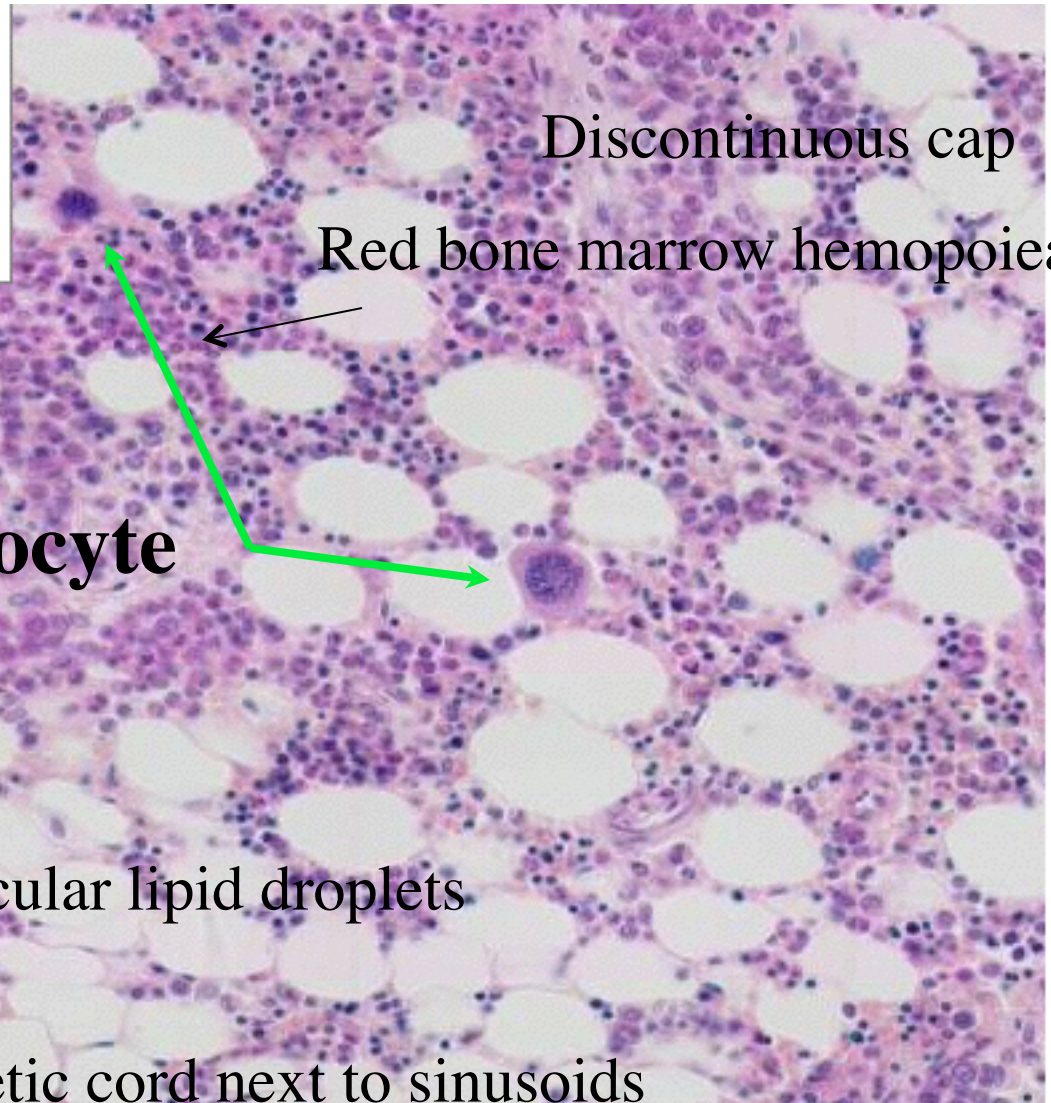






Specific tissue: Red bone marrow





Discontinuous cap

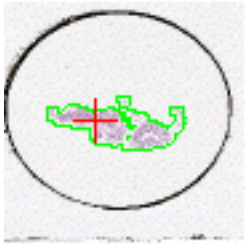
Red bone marrow hemopoietic tissue

**Megakaryocyte**

Unilocular lipid droplets

Hematopoietic cord next to sinusoids



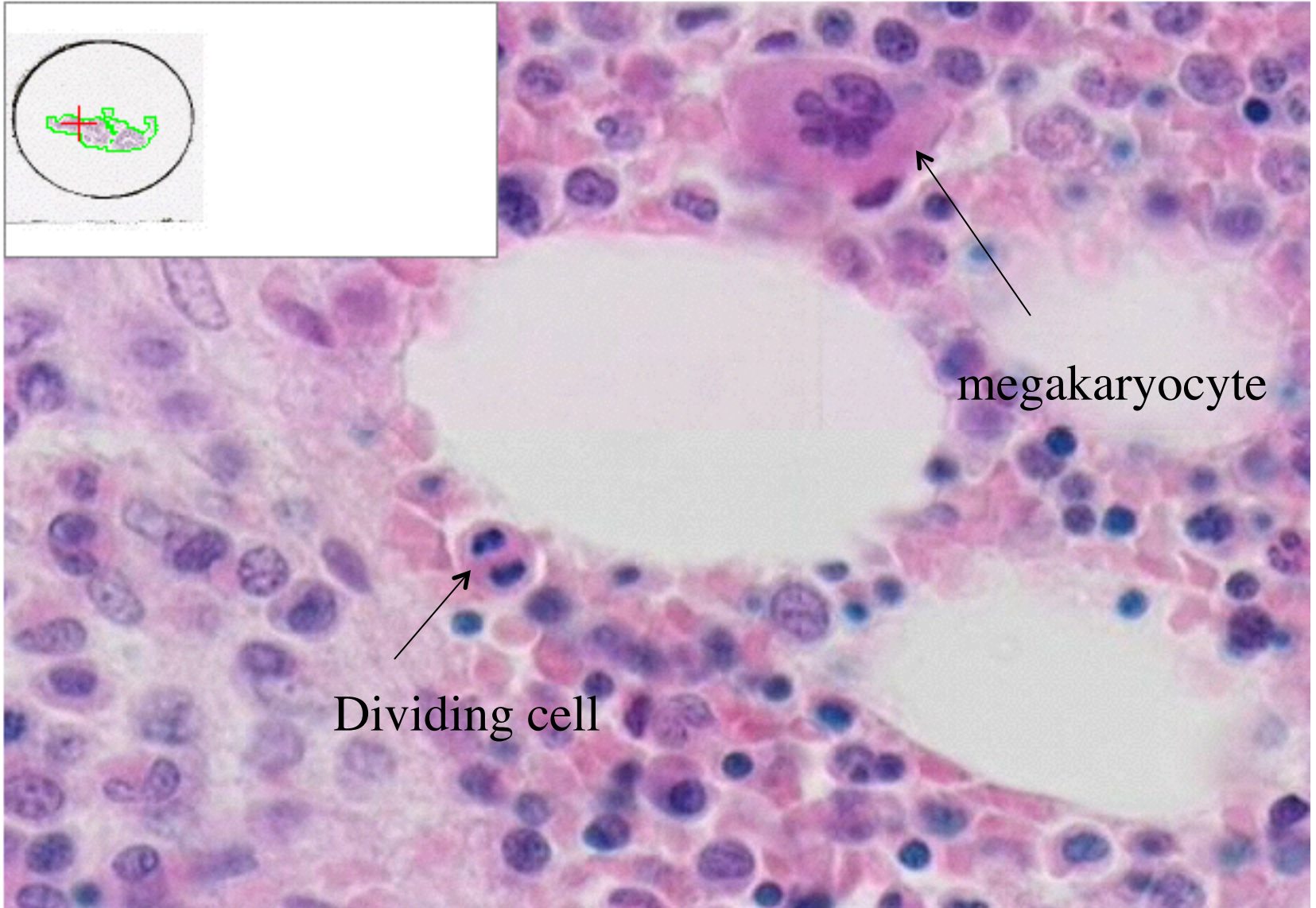


**Neutrophil**—is an neutrophil cell, beginning of nucleus turning  
Into a band—early neutrophil (stage between myelocyte and metamyelocyte)  
Myelocyte stage=begin to develop granules (in granular leukocytes)

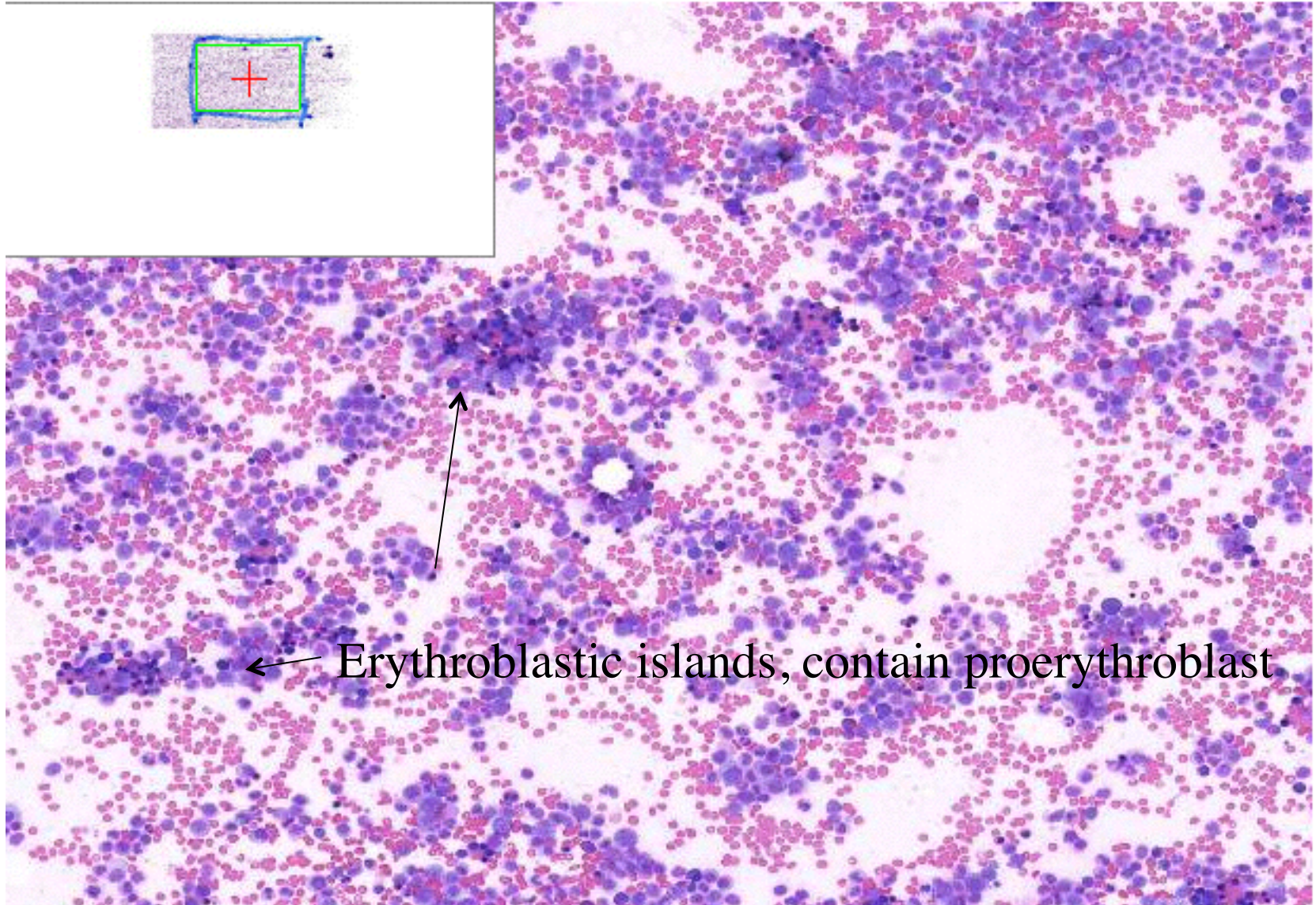




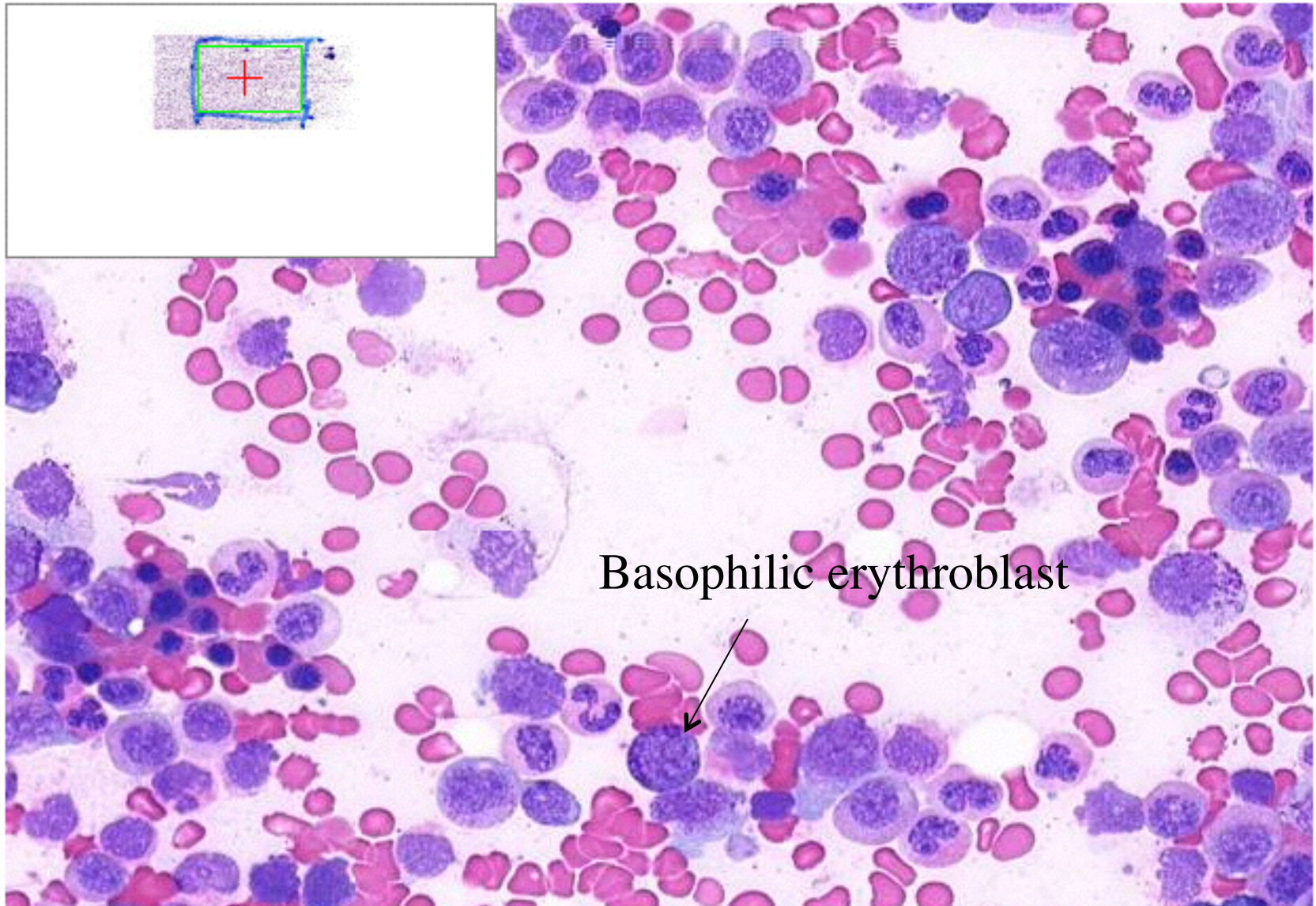
MCO 0020





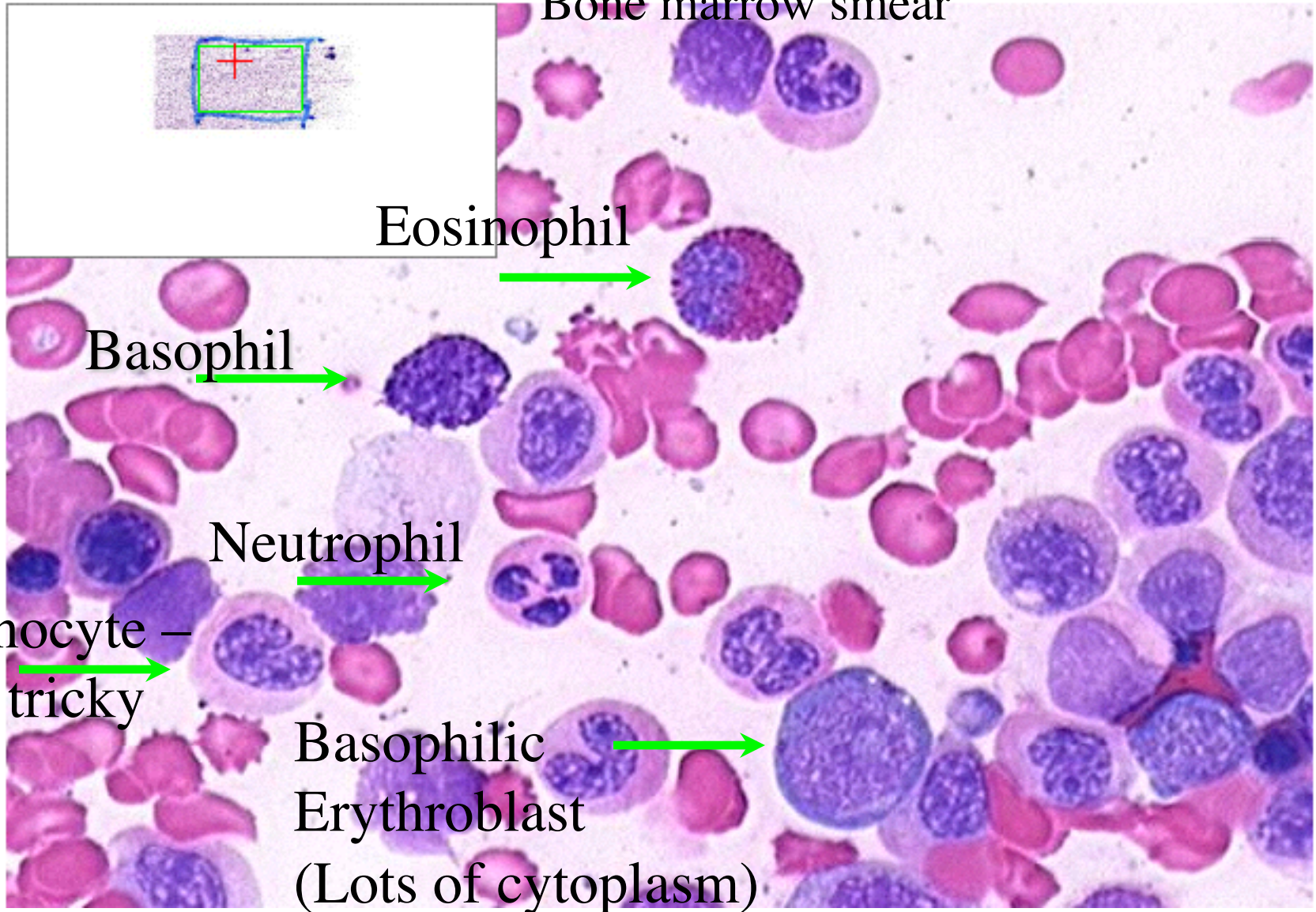








Bone marrow smear





# White cell development stages (Neutrophil)

MCO 0021

1. Promyelocyte

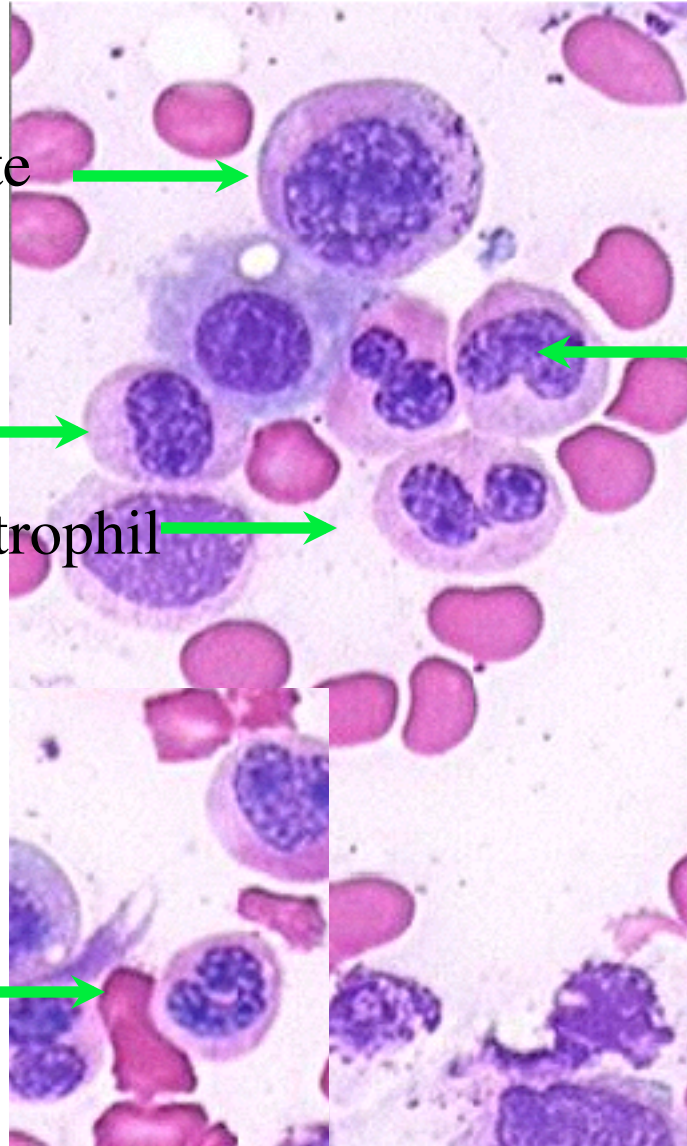
Late Myelocyte/

2. Early Metamyelocyte

6. Neutrophil

5. Band cell

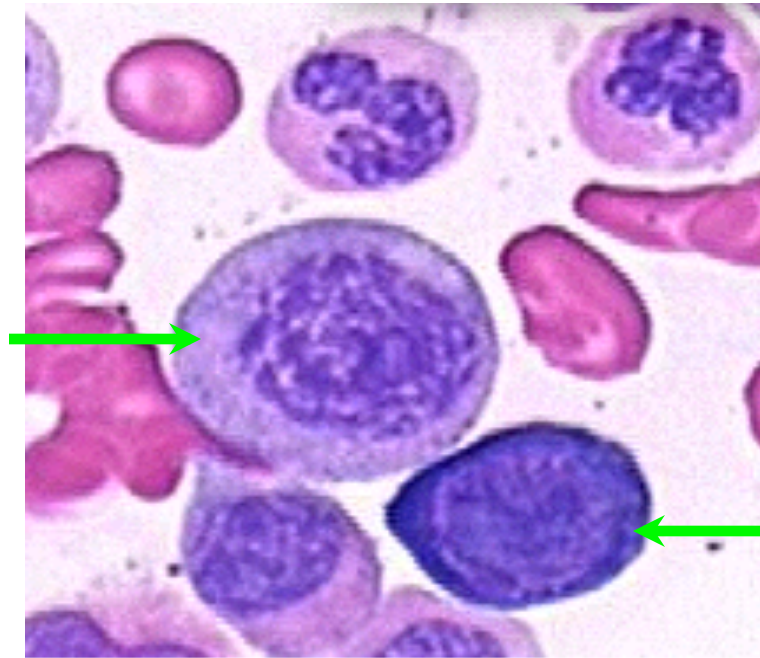
3. Late Metamyelocyte





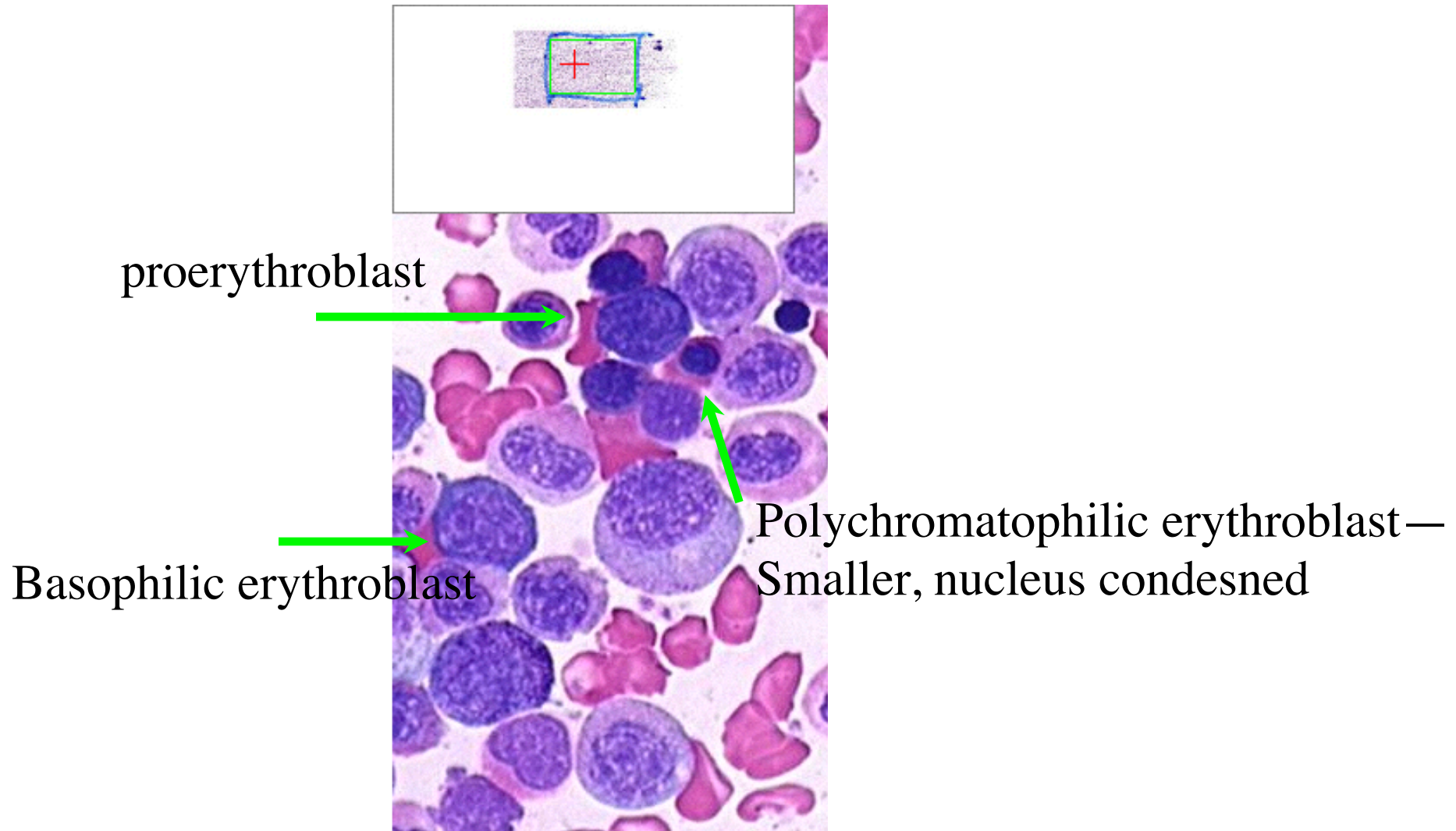
MCO 0021

white  
promyelocyte



red  
proerythroblast







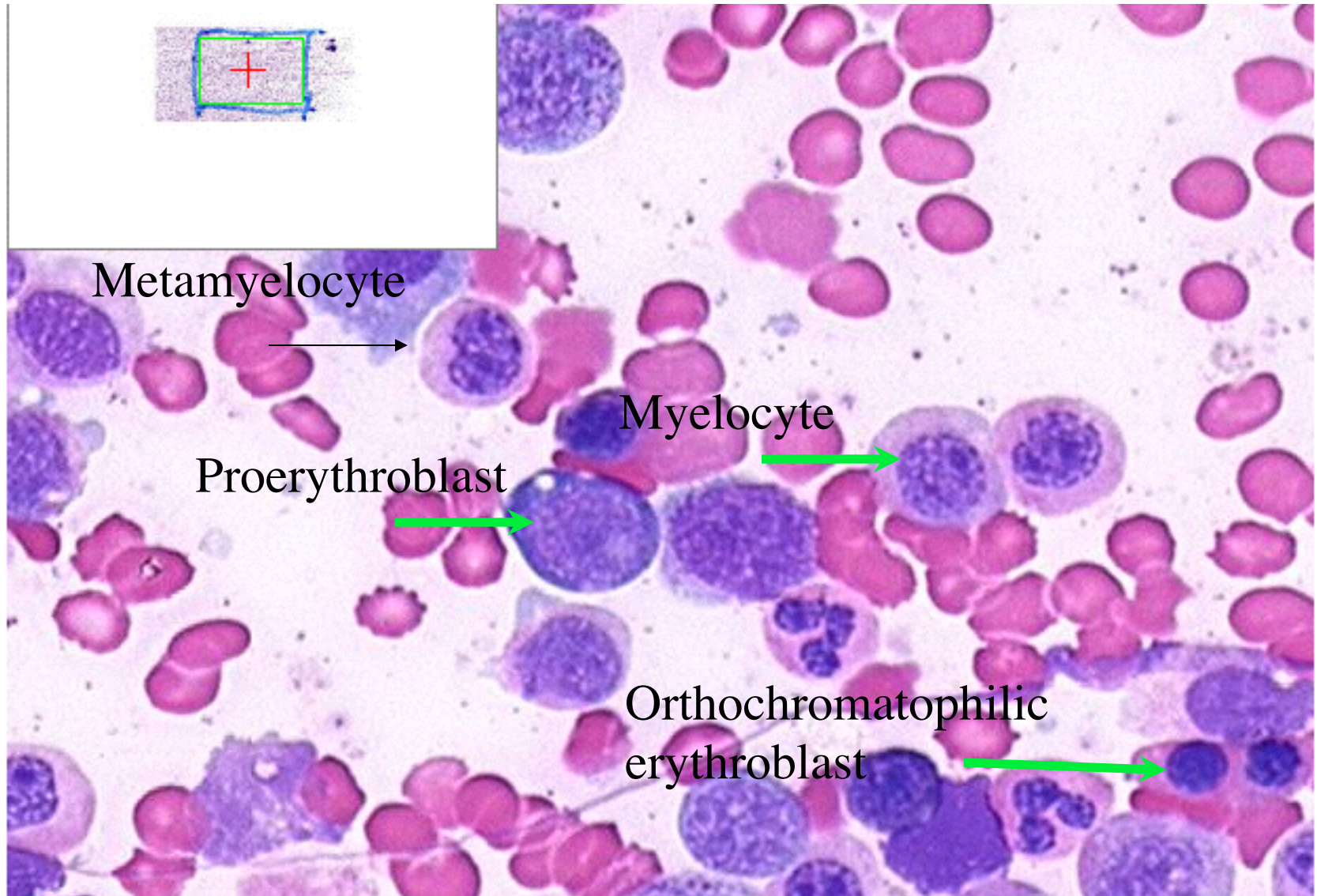
Polychromatophilic  
erythroblast

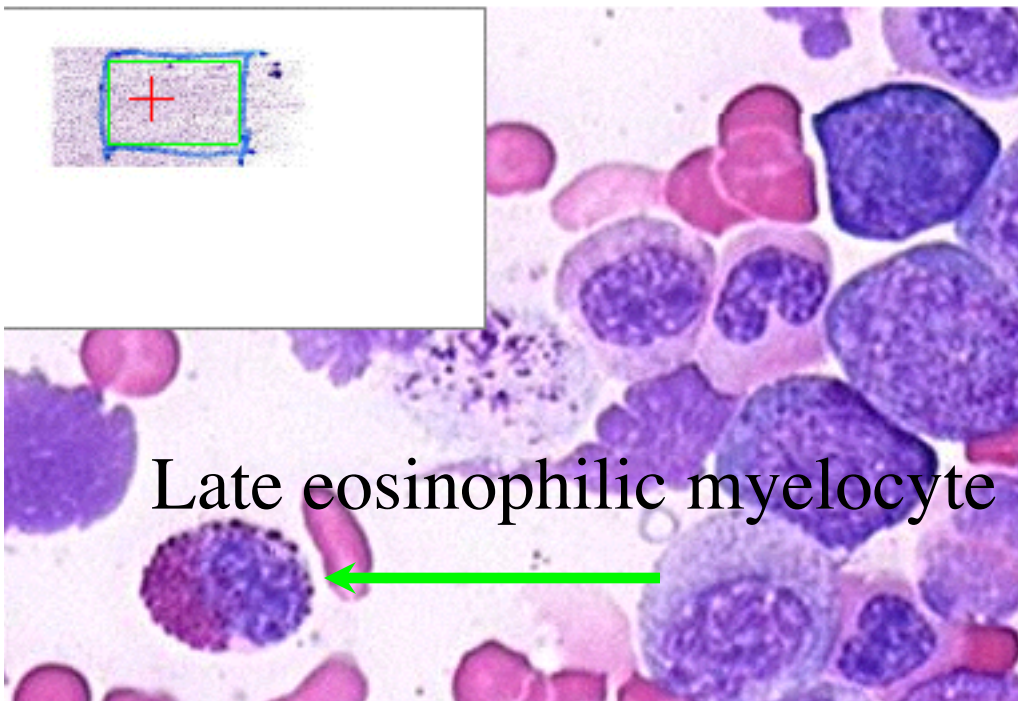
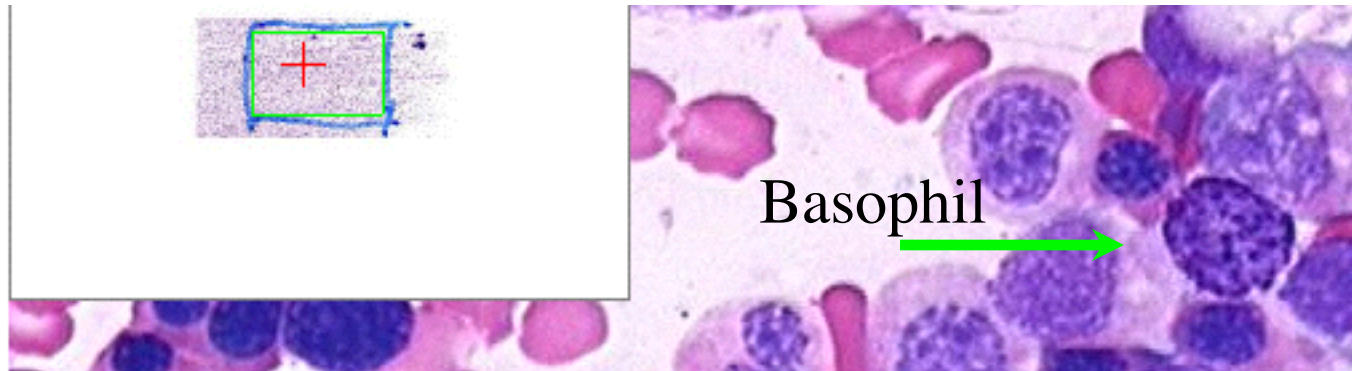
Know what they look like/why?



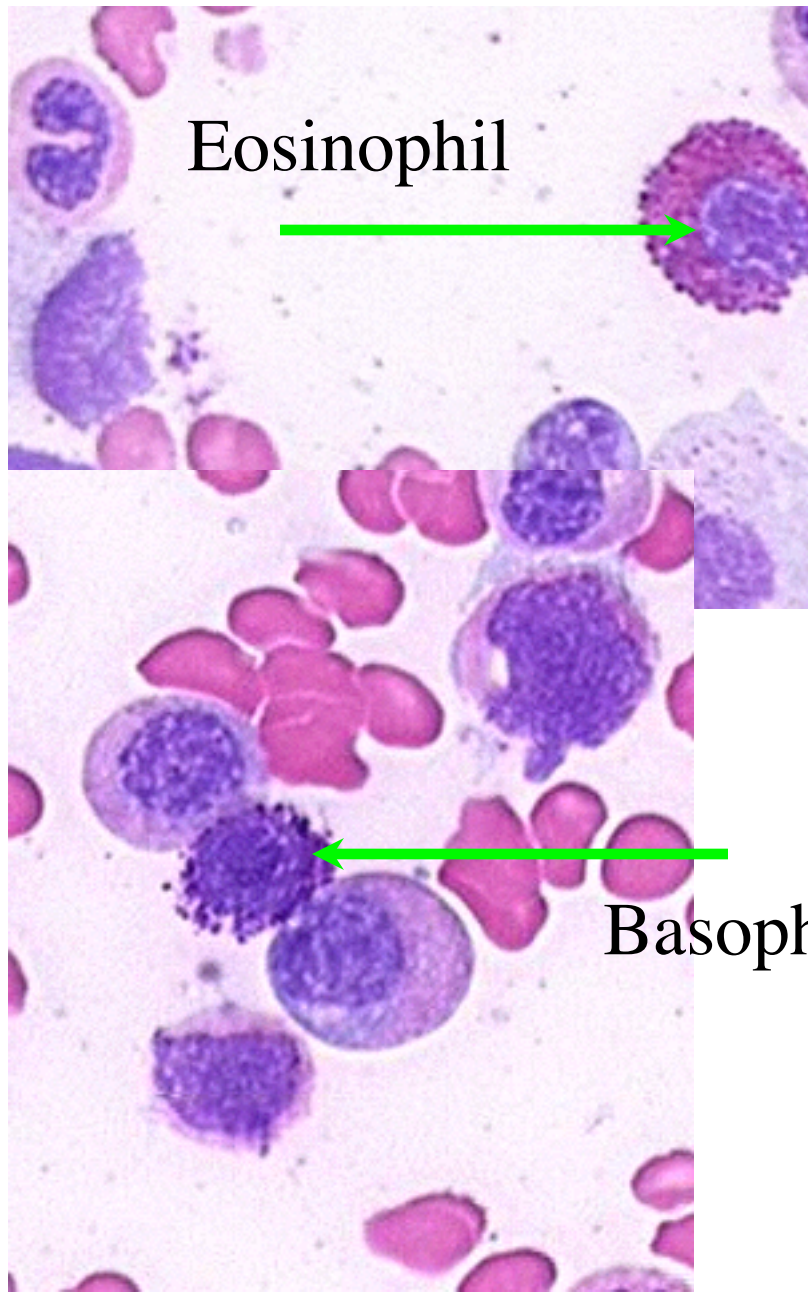
Orthochromatophilic  
erythroblast







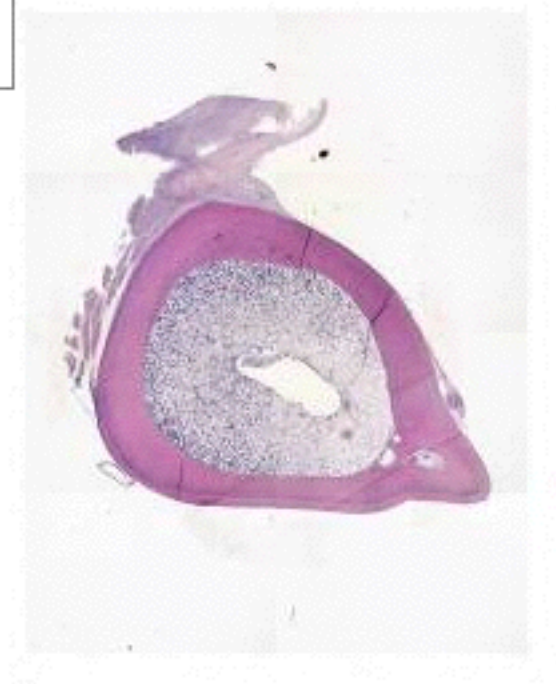




Major Basic Protein  
MCO 0021

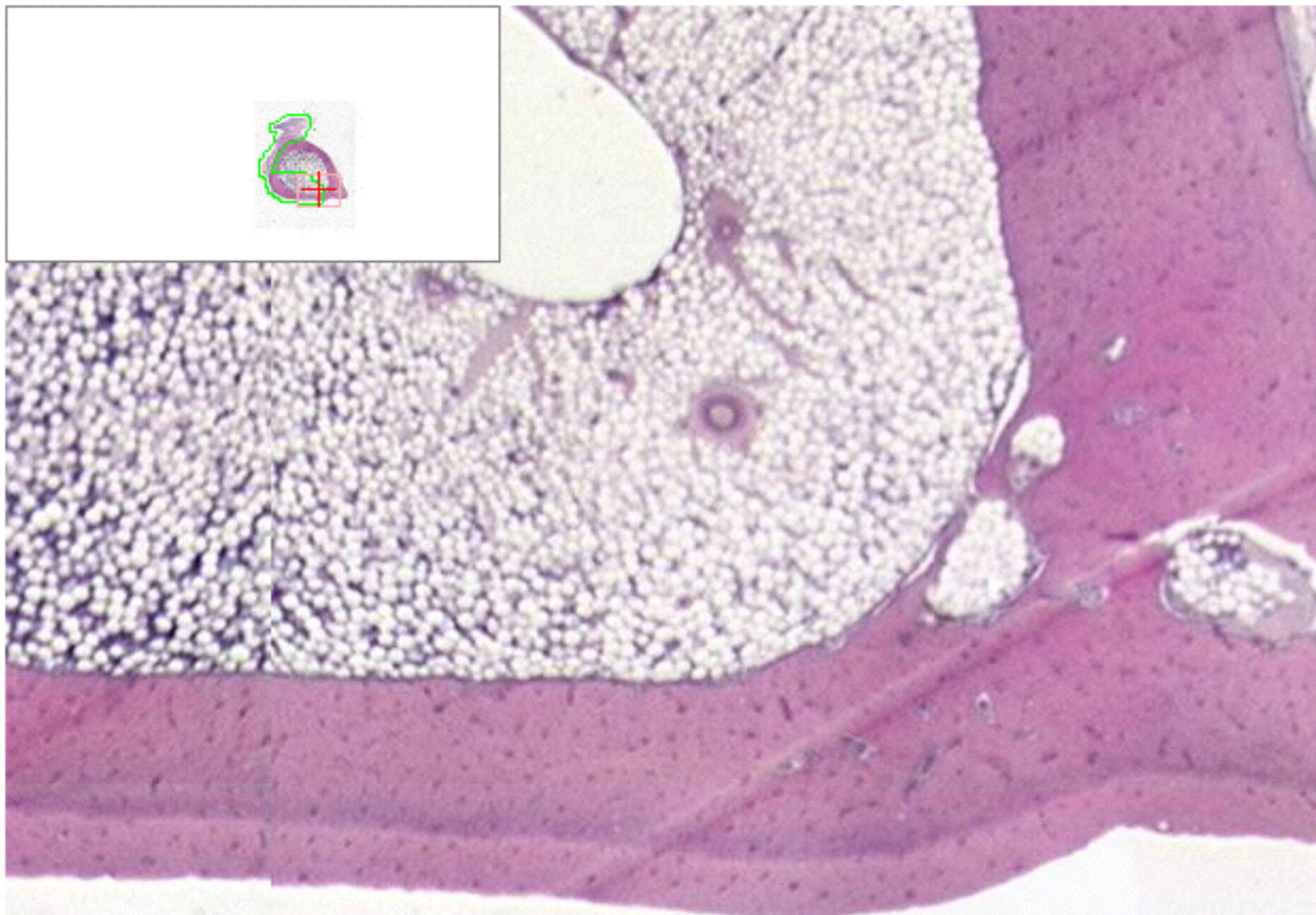


UW 2016





UW 2016



THE END